

# DIALIGHT

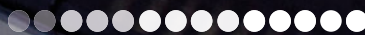
MAKING A VISIBLE DIFFERENCE



**A FINE SELECTION OF OUR HIGH QUALITY INDUSTRIAL EX LIGHTING**



Dialight





## ULTRA-EFFICIENT INDUSTRIAL LED HIGH BAY REVOLUTIONIZES THE WORLD OF LED LIGHTING

**ATEX ZONE 1/2 & 21/22**

*The Dialight SafeSite® LED High Bay luminaire was designed specifically to replace conventional lighting in a wide variety of hazardous area applications, both indoor and outdoor.*

The low profile light weight design and versatile mounting options of the LED High Bay make it ideal for ATEX and IECEx classified hazardous area zones.

### CERTIFICATIONS & RATINGS

#### Standard ATEX/IECEx - 14,500lm

- Ex II 2 GD Ex d IIB T4 Gb (factory fitted cable)
- Ex II 2 GD Ex d e IIB T4 Gb (factory fitted junction box)
- Ex tb IIIC 135°C Db

#### Standard ATEX/IECEx - 9,500lm and 11,500lm

- Ex II 2 GD Ex d IIB T5 Gb (factory fitted cable)
- Ex II 2 GD Ex d e IIB T5 Gb (factory fitted junction box)
- Ex tb IIIC 100°C Db

#### All Standard ATEX/IECEx

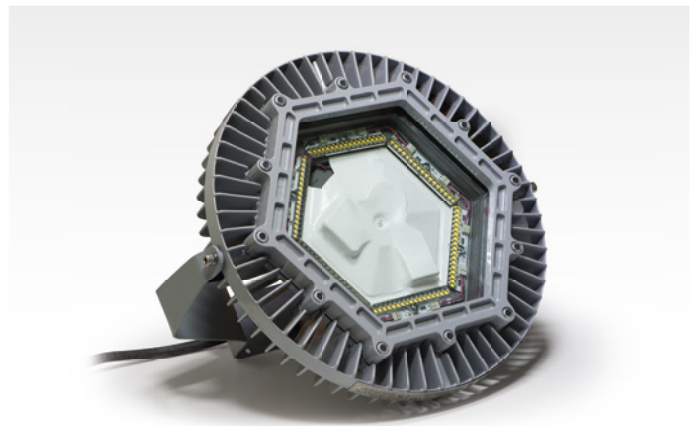
- Certificate numbers: IECEx BAS 10.0074X, Baseefa 10ATEX0148X

#### Hydrogen Environment ATEX / IECEx Models (9,500 - 14,500lm)

- Ex II 2 GD Ex d IIB+H2 T5 Gb (factory fitted cable)
- Ex II 2 GD Ex d e IIB+H2 T5 Gb (factory fitted junction box)
- Ex tb IIIC T100°C Db IP 66
- Certificate numbers: IECEx BAS 12.0044X, Baseefa 12ATEX0070X

#### All Models

- ATEX Zones 1, 21
- ATEX Zones 2, 22
- CE - EN 55015-2006 & 61547
- RoHS compliant
- IP 66
- ABS Design Assessed: #13-HS1043210A



### PRODUCT HIGHLIGHTS

- L70 rated for >100,000 hours @ 25°C ambient
- 5 year full performance warranty (9,500-14,500lm)
- Class I Div. 2 versions available
- Instant on/off operation
- Mercury free, lead free
- Resistant to shock and vibration
- Superior colour rendition index compared to HPS, LPS & MV
- Temperature compensation technology for longer life
- SWB/EPR Cable 3 core 1.5mm<sup>2</sup> CSA or Junction Box option
- One man installation
- Replaces up to 400W HID fittings
- Optional glass retention film for applications where glass is non-preferred



## FUTURE OF ENERGY EFFICIENT FACILITY ILLUMINATION FOR INDUSTRIAL APPLICATIONS WORLDWIDE

**ATEX ZONE 1/2 & 21/22**

*The SafeSite® LED area light represents the future of energy efficient facility illumination for hazardous areas worldwide.*

The ATEX / IECEx LED area lighting fixture consumes at least 50% less energy compared to traditional HID light sources, while reducing maintenance and carbon emissions. This light incorporates both cutting edge LED technology along with proprietary optics to achieve area lighting comparable with other traditional light sources.

#### CERTIFICATIONS & RATINGS

- Ex II 2GD Ex d IIC T4 Gb (Ta = -40°C to +65°C)
- Ex II 2GD Ex d IIC T5 Gb (Ta = -40°C to +42°C)
- Ex t IIIC T1 35°C Db IP 6X (Ta = -40°C to +65°C)
- Ex t IIIC T100°C Db IP 6X (Ta = -40°C to +42°C)
- Certificate numbers: IECEx SIR 11.0156, SIRA 11ATEX1357
- ATEX Zones 1, 21
- ATEX Zones 2, 22
- ABS Design Assessed: 13-HS1043210C-PDA
- IP 66
- RoHS compliant
- IK08 impact rating



#### PRODUCT HIGHLIGHTS

- L70 rated for >100,000 hours @ 25°C ambient
- 5 year full performance warranty
- Sandblasting cover protector available
- Class I Div. 2 versions available
- Instant on/off operation
- Mercury free, lead free
- Resistant to shock and vibration
- Plug and play - can be supplied complete with approved cable and plug



**LOW PROFILE AND RUGGED DESIGN ENSURES LONG LIFE AND HIGH RELIABILITY FOR INDUSTRIAL APPLICATIONS**

**ATEX ZONE 1/2 & 21/22**

*The Dialight SafeSite® LED Linear luminaire with its low profile, rugged design ensures long life and high reliability for a wide variety of hazardous area applications.*

Offered in 32W and 64W versions to replicate the light output of typical 2 x 18W & 2 x 36W fluorescent luminaires respectively, the LED Linear luminaire is ideally suited for oil & gas, chemical, petro-chemical and other potentially explosive industrial environments. Dialight offers a range of mounting options for use with the SafeSite Linear luminaire.

**CERTIFICATIONS & RATINGS**

- Ex II 2GD e mb IIC T4 Gb (Ta = -20°C to +60°C)
- Ex tb IIIC T135°C Db (Ta = -20°C to +60°C)
- Certificate numbers: IECEx SIR12.0093, SIRA12ATEX3217
- ATEX Zones 1, 21
- ATEX Zones 2, 22
- CE - EN55015:2006 / EN61547:2009 / EN60598:2008
- ABS Design Assessed: #13-HS1043210B
- IP66
- Impact Rating to EN 50102: IK09
- C & D shock comp



**PRODUCT HIGHLIGHTS**

- Emergency versions available
- L70 rated for >100,000 hours @ 25°C ambient
- 5 year full performance warranty (Battery not included)
- Instant on/off operation
- Universal input (110-250V AC, 50/60Hz), (Emergency 230-240V AC, 50/60Hz)
- Superior colour rendition index compared to HPS, LPS, MV
- Mercury free
- Resistant to shock and vibration
- Easy retrofit solution for existing fluorescent fittings due to same size and fixing centres



**LOW PROFILE AND RUGGED DESIGN ENSURES LONG LIFE AND HIGH RELIABILITY FOR INDUSTRIAL APPLICATIONS**

**ATEX ZONE 1/2 & 21/22**

*The Dialight SafeSite® LED Bulkhead luminaire with its low profile, rugged design ensures long life and high reliability for a wide variety of Hazardous Area applications.*

Offered in 11W, 22W and 34W models, the Safesite LED Bulkhead is ideally suited for oil & gas, chemical, petro-chemical and other potentially explosive industrial environments. Dialight offers flush, angle and adjustable mounting options for use with the SafeSite LED Bulkhead as well as a recessed housing approved for hazardous areas.

**CERTIFICATIONS & RATINGS**

**11W / 22W**

- Ex d e mb IIC T6 Gb, Ex tb IIIC T85°C Db II 2GD
- ABS Assessed: #11-LD678508-1-PDA

**34W**

- Ex d e mb IIC T5 Gb, Ex tb IIIC T100°C Db II 2GD

- ATEX Zone 1, 21
- ATEX Zone 2, 22
- Certificate numbers: IECEx BAS 10.0051X, Baseefa10ATEX0092X

- CE - EN 55015-2006 & EN 61547
- Impact Rating to EN 50102: IK09
- IP 66
- RoHS compliant



**PRODUCT HIGHLIGHTS**

- Emergency versions available
- L70 rated for >100,000 hours @ 25°C ambient
- 5 year full performance warranty
- Sandblasting cover protector available
- Class I Div. 2 versions available
- Instant on/off operation
- Mercury free, lead free
- Resistant to shock and vibration
- Plug and play - can be supplied complete with approved cable and plug
- Additional LED colors available upon request:  
Green - for emergency shower lighting  
Red - for emergency lighting

## AUTHORIZED RESELLER

### NEDELKO B.V.

Riga 10  
2993 LW BARENDRECHT  
T +31 (0)180 64 54 00  
F +31 (0)180 64 54 05  
E info@nedelko.nl

[WWW.NEDELKO.NL](http://WWW.NEDELKO.NL)

FOR MORE INFORMATION, VISIT:  
[WWW.NEDELKO.NL/DIALIGHT](http://WWW.NEDELKO.NL/DIALIGHT)

## DIALIGHT

### MAKING A VISIBLE DIFFERENCE

Dialight defines the current state of LED lighting technology with continuous innovations in light output, efficacy and reliability for our complete line of high-specification lighting fixtures specifically designed for industrial, commercial, hazardous areas, transportation & public infrastructure applications. These results are directly related to our ongoing commitment to advancing solid-state lighting products that vastly reduce maintenance, improve safety, ease disposal, and are more environmentally friendly - thereby helping to reduce CO2 emissions, the dominant GHG contributor to global warming.

With our high-specification range of products we are uniquely positioned for a number of long-term global growth trends, many of which are driven by government regulations and environmental initiatives. These include the current global infrastructure build-out, and the need for improvements to the efficiency, reliability and productivity of the electrical grid. The Dialight Group is headquartered in the UK with manufacturing facilities in Brazil, Denmark, Malaysia, Mexico, the US and the UK. Further offices can be found in Australia, Germany, Singapore and the United Arab Emirates.

